

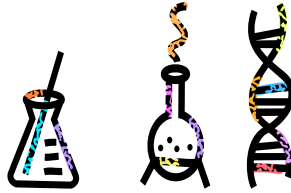
HEADS UP TO ALL “SCIENCE-MINDED” PARENTS, BUSINESS OWNERS and EMPLOYEES, RELATIVES and FRIENDS

HAVE YOU EVER WONDERED....

- what type of food molds the fastest?
- how effective are child-proof containers and locks?
 - does shoe design affect jumping height?
 - does the room color affect human behavior?
- can kids concentrate better (or worse) with the TV on?

These answers and many more will be available to you, along with the young scientists (grades K-5th) who researched these mysteries, and have *proven data* to back up their results. They **need the listening ears of visiting scientists** like you, to hear their exciting experiments, methods, and conclusions explained

at the PINEY RIDGE ELEMENTARY SCIENCE FAIR



Thursday evening at 7-8:30pm, November 18th, 2010
at PINEY RIDGE ELEMENTARY SCHOOL

Anyone interested in being a visiting scientist to help judge the projects should fill out the bottom portion of this slip and return it to Piney Ridge Elementary School, **Attn. Science Fair Committee** or send an email to jeremycooper2009@hotmail.com.

Remember, these children are our future, and it only takes one inquisitive and supportive adult to inspire the passion for science!

 Yes, I would like to be a “Visiting Scientist” at the Piney Ridge Science Fair!

Name: _____

Contact information: _____
(E-MAIL) phone, cell, company representing)